

**healthy lifestyle**

**Yule(羽乐) Badminton Club**



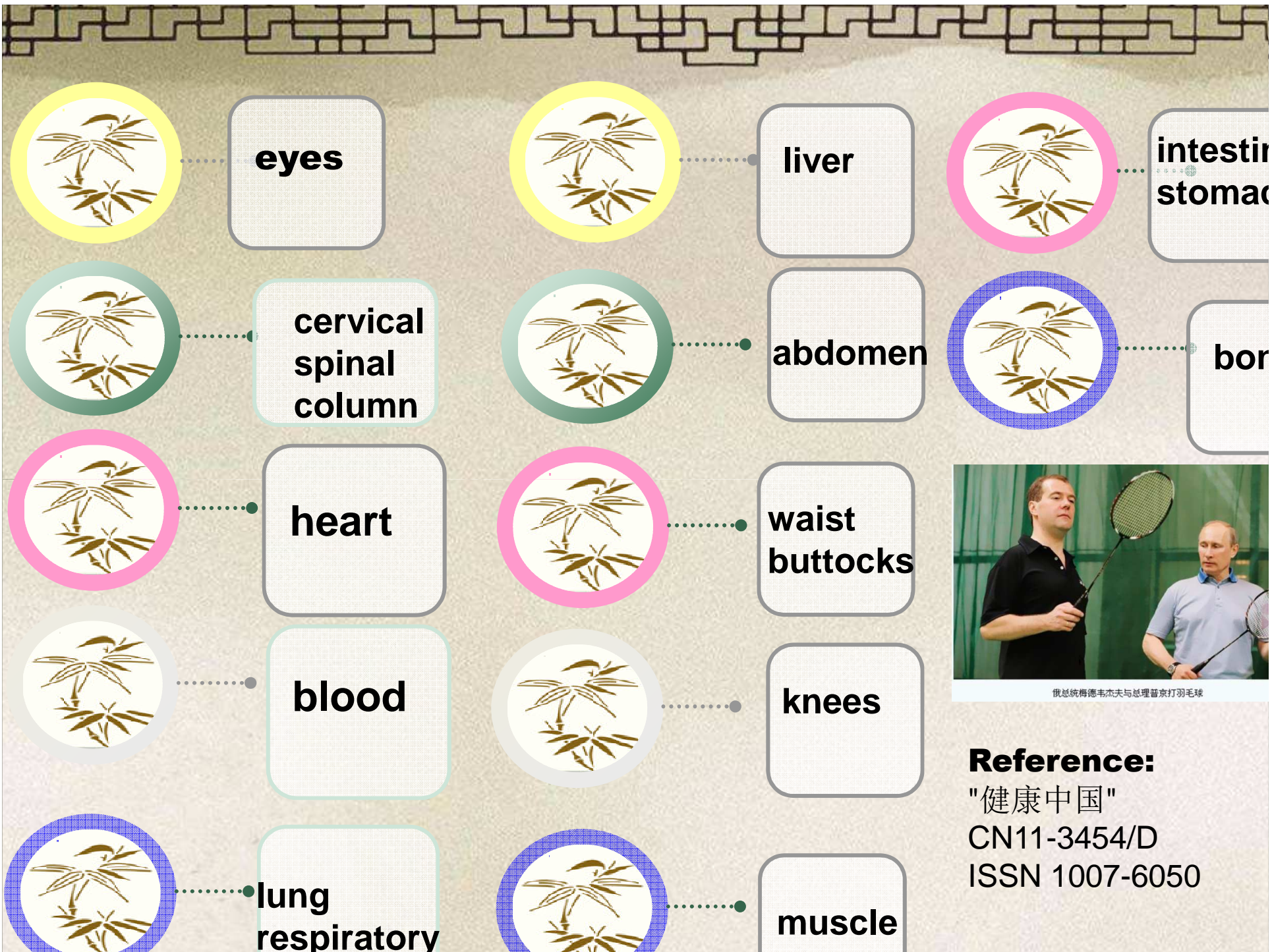
**\*崔忆萌 \*Merina Cui**  
**Hefei University of Technology**





**the links between  
badminton and  
our health**





俄总统梅德韦杰夫与总理普京打羽毛球

**Reference:**

"健康中国"

CN11-3454/D

ISSN 1007-6050

## put my thinkings into practical

**analyse**

- 1 the **information** of all badminton club in the city
- 2 **comparison** of these badminton club

**evaluation**

- 3 collect datas on **infrastructure** of A-Level badminton clubs(the hight and details of the light,the material of glue ground)

**make budget**

- 4 the **management of cost control** (rent fee+decoration+goods for sales)

\*objective issue: meterial

\*subjective issue: supervise of the workers

**assessment**

- 5 the publicize canals adds.  
negotiation with concerned ...





- 1 Rent the empty factory and sign contract with the owner. Get via to own two parking lot around our club.
- 2 Purchase Infrastructure of the badminton club.including the meterials for decoration of the club.**the professional lights for badminton. badminton rack and glue ground of the club.**

3 Design drawings of the badminton club,the Logo of club, VIP card,the menu and price in detail.

4 Register business certificate ;

5 Employ a team of workers for decoration.+decoration of the office,the washroom. **Supervise the workers** .





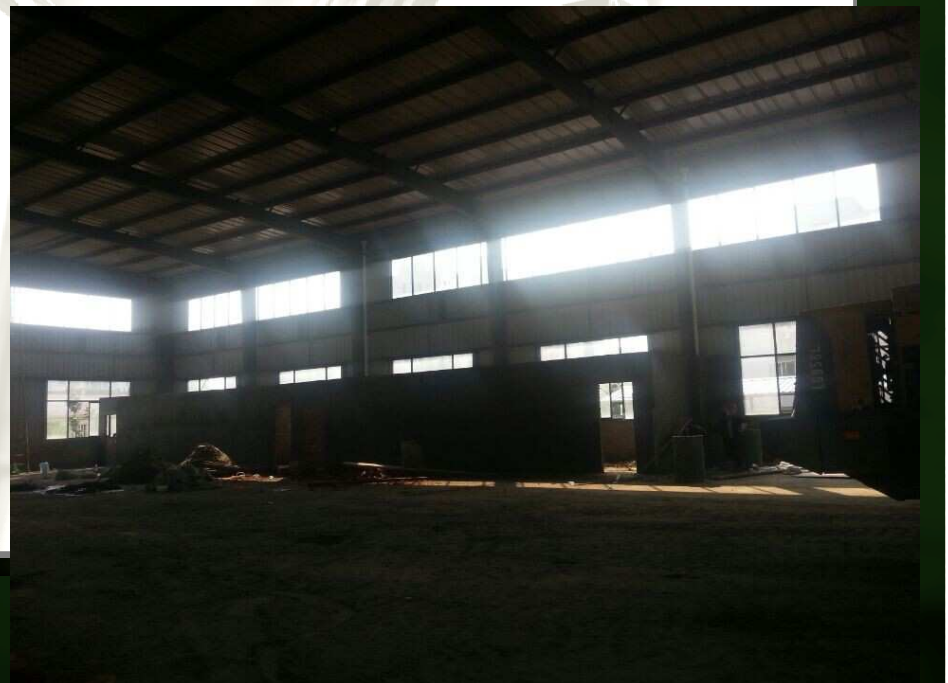
**Market Research** of badminton club in Tongling,

1 list all clubs fee in detail

2 make comparison of the clubs' environment and feature and analysis the advantages + disadvantages .

3 discover the main customers of each badminton club and make sure of their ancillary facilities. Eg washroom, restroom, shopping corner, design of the table.

4 make Cost budget and search for Potential customers + Fixed client .





青島



- **address:** the main road of Tongdu, Number 3328.
- Tongling, Anhui Province, china.
- Establish on July 6th of 2014.









青島









**Some Super VIPs of my Yule badminton club, and they are also my close friends.**



# VIPs of Yule Badminton club

一

**Trade union of Tongling**

二

**ICBC of Tongling**

三

**Non-ferrous Pioneer Metals Corporation  
of Tongling(in the Chinese 500 strong enterprises)**

四

**Ament food co.,Ltd**

五

**City planning Bureau of Tongling**

六

**Bureau of Education of Tongling**











# Creative Tips of Yule Badminton club

- 1 Camera to record the process .
- 2 Colorful Activities for club Vips.Club suits
- 3 pound notes+changes for each customer
- 4 formal and imformal badminton matches between different enterprises,association
- 5 Coach for both training and playing
- 6 Safeguard of merchandise
- 7 Dynamic develop with the internet.

悟





Thank You

Welcome any ideas and suggestions  
sharing with me

敬请各位专家，教授批评指正给出宝贵意见！

谢谢大家！

